



Gunnebo SafePay Collect

Faster, safer and more controlled transactions at the Front Office

GUNNEBO[®]



High Security for Compact Stores

SafePay Collect provides a complete range of front-end solutions for cash payments, that perfectly adapt to the size, number of cashiers and transactions in small and midsize businesses.

Space and security do not have to be mutually exclusive. This solution offers shops the possibility of managing cash in a highly secure manner without having to struggle to find extra room in the store. You will also gain in efficiency, as cashiers will be relieved of time-consuming administration. With the CashControl built in software, every single cash operation will be tracked so you can always have earning under control.

The new SafePay Collect family represents an extension of the traditional SafePay portfolio built from existing and well-proven technology with references worldwide.

Offering a solution designed around you, for you, for your every need. You can choose whether to collect daily takings into a key locked front cassette or into a thermally sealed plastic bag; having therefore the possibility to close the cash loop with no access to money at any time

No matter the space you have in the check-out, SafePay Collect will meet your needs. With the Slim Edition you will have the thinnest front-end recycling system of the market and all are fully prepared for self-service and/or cashier operated terminals.

Gunnebo's SafePay solutions offer customers a quick and efficient way to pay with cash in any type of store.

Benefits at a glance

1

Closed and controlled Cash Management at check-out

2

No security gaps within the whole cash cycle

3

Streamlined investment

4

Simple staff maintenance

5

Designed for self-service or cashier operation

Product Features



Multiple Configurations

- SafePay Collect interface sealed bag (SB)
- SafePay Collect interface sealed bag (SB) – slim edition
- SafePay Collect interface cassette (CS)
- SafePay Collect interface cassette (CS) – slim edition
- All SafePay families can be customized with the colour of your choice



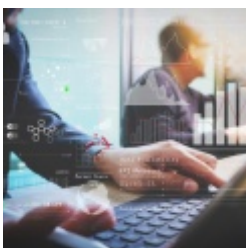
Easy to use

- Enhanced note insertion
- Graphical display for clear communication with your customers
- Adapted for disability access
- Multiple currencies
- Equipped for cash back



Closed and secured system

- Cash never exposed
- Bag with daily earnings is automatically sealed before it can be collected with amount verified
- Key Lock protected cassette
- ECB certified authenticity control
- Floor anchored for physical protection



Streamlined investment

- Allows multiple POS configurations- up to 5 POS per SafePay
- Optimization of end-to-end cash process
- Cash reporting and automatic reconciliation
- Remote Service Monitoring
- Desktop and Mobile web based platform for centralized control – CashControl



Simple Maintenance

- Staff can solve problems quickly themselves
- Plug & Play replacement of key parts
- Remote problem solving through CashControl
- Problem solving routines clearly displayed on standard POS screen and CashControl based platform for centralized control

Technical Data

	Collect SB	Collect SB - slim edition	Collect CS	Collect CS - slim edition
CR Dimensions mm (L x W x H) mm	328 x 300 x 624	451 x 130 x 1.317	328 x 300 x 624	451 x 130 x 1.317
NR Dimensions mm (L x W x H) mm	573 x 269 x 839	573 x 269 x 839	479 x 210 x 738	479 x 210 x 738
Weight	113 Kg	135 Kg	76 Kg	98 Kg
Speed – notes	approx. 1 note per sec	approx. 1 note per sec	approx. 1 note per sec	approx. 1 note per sec
Speed – coin deposit	5 coins per sec	2 coins per sec	5 coins per sec	2 coins per sec
Speed – coin dispensing	avg. 6 coins per sec	3,5 coins per sec	avg. 6 coins per sec	3,5 coins per sec
Coin bulk capacity	200 coins	25-75 coins	200 coins	25-75 coins
Storage – notes	up to 1.400	up to 1.400	up to 800	up to 800
Storage – coins	3.000 mixed denominations	100 – 1.000 per denomination	3.000 mixed denominations	100 – 1.000 per denomination
Voltage	230V	230V	230V	230V
Connections	RS232, RS485, Ethernet LAN, Power 24V DC input / output	RS232, RS485, Ethernet LAN, Power 24V DC input / output	RS232, RS485, Ethernet LAN, Power 24V DC input / output	RS232, RS485, Ethernet LAN, Power 24V DC input / output
Currencies	EUR, GBP, SEK, NOK, DKK, PLN, ZAR, MXN, RM, CHF, THB, SGD, AUD	EUR, GBP, SEK, NOK, DKK, PLN, ZAR, MXN, RM, CHF, THB, SGD, AUD	EUR, GBP, SEK, NOK, DKK, PLN, ZAR, MXN, RM, CHF, THB, SGD, AUD	EUR, GBP, SEK, NOK, DKK, PLN, ZAR, MXN, RM, CHF, THB, SGD, AUD

Security

- Authenticity control
- Floor anchoring
- Prevent from robberies and shrinkage
- Coin module with key lock or dual key lock
- Full event logging including potential fraud attempts

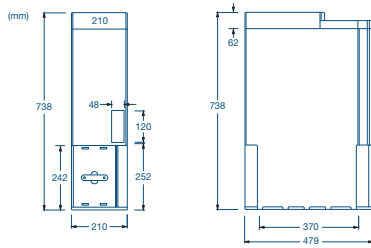
Application Areas

- Traditional check-outs
- Self-service check-outs
- Self-Payment stations
- Small and mid-sized stores

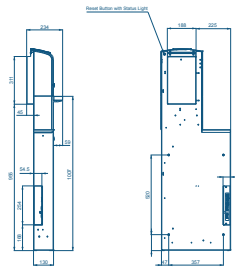
Options

- Multicurrency support
- Configurations with Interface seal bag deposit capacity of 500 – 1.400 notes
- Configurations with Interface cassette deposit capacity of 400 – 800 notes
- Recycling capacity from 100 notes (all denominations) up to 900 notes

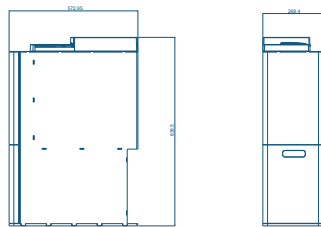
Note Recycler interface cassette



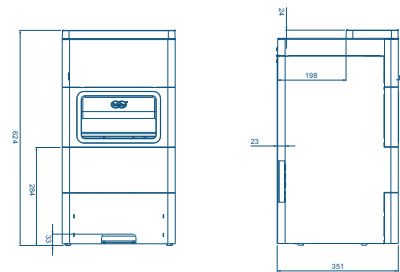
Coin Recycler – slim Edition



Note Recycler interface seal bag



Coin Recycler



About Closed Cash Management

SafePay Collect family forms part of the SafePay closed cash management solution for retailers. Closed cash handling protects cash from the moment a customer pays all the way to the cash-counting centre – no gaps in security and no weak links in the chain. It replaces manual tills with a much more secure system which recycles cash and removes cash differences. Gunnebo is a pioneer in this field and has worked closely together with leading European retailers to develop SafePay – a reliable, secure and efficient closed cash handling system.



Want to see our SafePay Solutions in full action?
Scan this QR code with your smartphone.
Or search for "SafePay" on YouTube.

Gunnebo SafePay Collect

Design and production: Gunnebo. Photos Credits: Gunnebo. The data given in this material may be subject to change without further notice. The Gunnebo logos and "Gunnebo - For a safer world" are registered trademarks of Gunnebo AB.



Take advantage of our knowledge:
blog.gunneboCashmanagement.com or
gunneboCashmanagement.com

GUNNEBO®